

Marlborough

Art Basel

June 13 – 16, 2019

Previews June 11 & 12

Hall 2.0, Stand H3

Marlborough is pleased to announce a solo presentation of paintings and sculpture by longtime gallery artist Paula Rego. Born in Portugal in 1935, Rego is a central figure to the School of London painters whose contribution to British art is widely celebrated. Her deeply psychological allegories have maintained a powerful presence in narrative painting across Europe for more than six decades.

The stand will include some of Rego's most celebrated paintings recently exhibited in the artist's solo exhibition at *Musée de l'Orangerie* in Paris organized by Cécile Debray. With her unique approach of using pastel and acrylic to create monumental paintings, Rego blends literary and folkloric sources with art history and strong autobiographical elements. Her allegiance to the art historical canon is combined with a radical dedication to her unique voice. Included in the presentation are the monumental paintings *The Fitting* (1989) and *The Family* (1988), widely regarded as two of her most ambitious undertakings. These works display her remarkable ability to merge reality with fiction using loaded imagery and symbolism to create an ambiguous narrative with psychological and sexual subtexts. A small group of Rego's most important hand-colored etchings will also be included, showing her continued commitment to printmaking over the past 30 years.

The timing of this presentation will serve as a preview and to her upcoming solo exhibition at the Tate Modern in 2021 and coincide with her one-person show at the MK Gallery in Milton Keynes.

In addition, as you will see from the attached checklist, our stand will also include a viewing room with a selection of works by gallery artists and other interesting material. Featured are recent paintings by Iraqi-born artist Ahmed Alsoudani that demonstrate his signature tumultuous compositions and combination of vigorous drawing and vibrant color. Also on view will be a pair of 2018 portrait heads by the legendary London School painter Frank Auerbach and a powerful chromatic abstraction from 2004 by the celebrated Chinese artist Zao Wou-Ki. Hand-painted cast bronze *Weed* sculptures by Tony Matelli sprout from the floor and infiltrate the staid surroundings, and a typically electrifying 1980s Werner Büttner provides a similar irreverence. Marker drawings by self-taught New Zealander Susan Te Kahurangi King, and an exciting group of early 70s watercolor and ink pieces by the great iconoclast H.C. Westermann comprise a truly surprising selection of works on paper by two true visionaries.

Marlborough



Paula Rego
The Fitting, 1990
acrylic on paper on canvas
52 x 72 in. / 132 x 183 cm

Marlborough



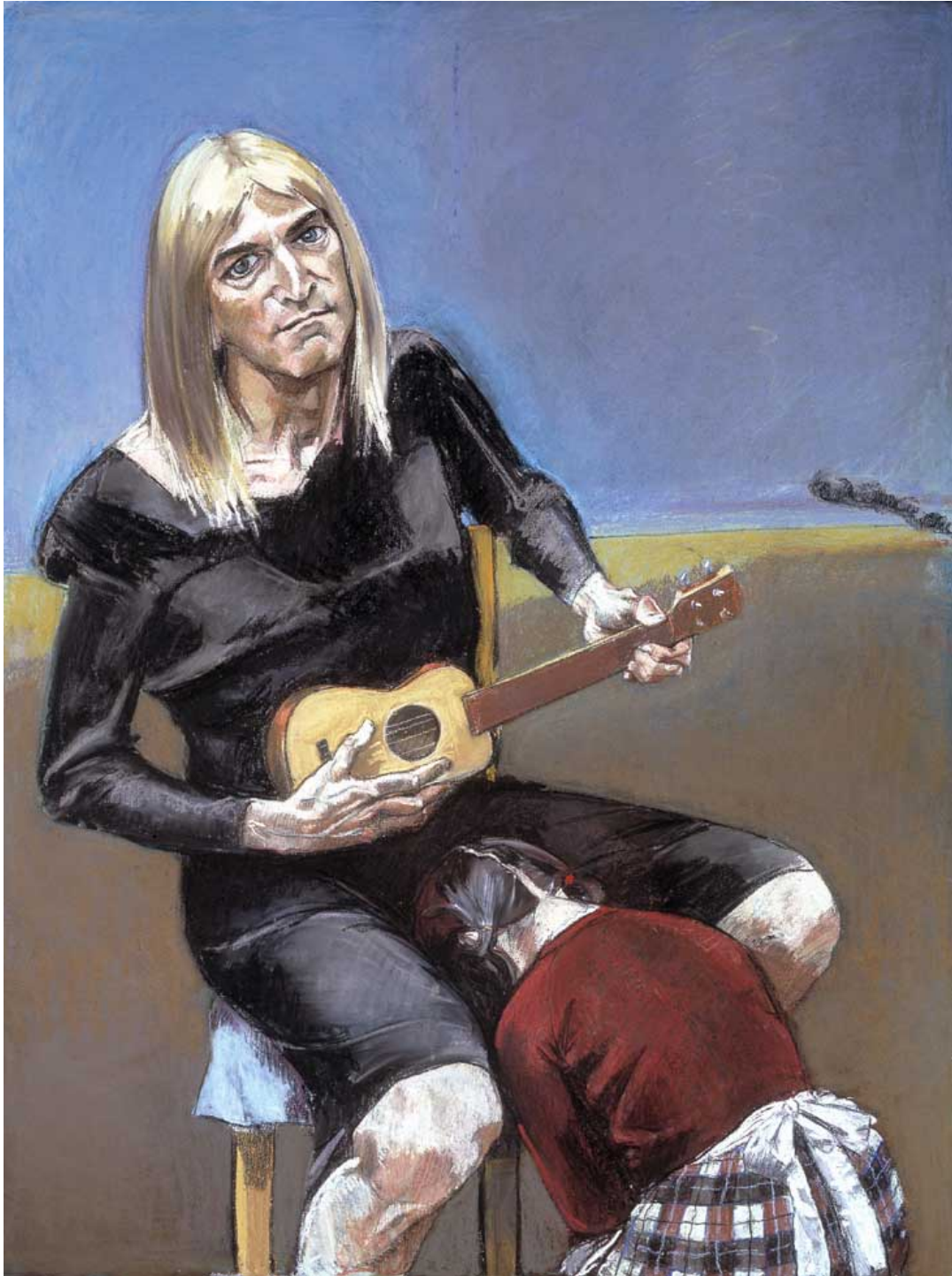
Paula Rego
The Family, 1988
acrylic on paper on canvas
84 x 84 in. / 213.4 x 213.4 cm

Marlborough



Paula Rego
Dancing Ostriches from Disney's Fantasia, 1995
pastel on paper on aluminum
59 x 59 in. / 150 x 150 cm

Marlborough



Paula Rego
Olga, 2003
pastel on paper mounted on aluminum
63 x 47 1/4 in. / 160 x 120 cm

Marlborough



Paula Rego
Prince Pig, 2005-2006
mixed media
55 1/8 x 45 3/8 x 35 3/8 in. / 140 x 90 x 90 cm

Marlborough



Paula Rego
Gluttony, 2019
mixed media
39 3/8 x 51 1/8 x 59 in. / 100 x 130 x 150 cm

Marlborough



Paula Rego
Gluttony, 2019
Detail

Marlborough



Paula Rego
Pride, 2019
mixed media
39 3/8 x 51 1/8 x 67 in. / 100 x 130 x 170 cm

Marlborough



Paula Rego
Pride, 2019
Detail

Marlborough



Paula Rego
Pride, 2019
Detail

Marlborough



Paula Rego
Mouth Organ, 2003
pastel on paper
41 x 31 in. / 104.1 x 78.7 cm

Marlborough



Paula Rego
Dancing Ostriches (Triptych), 1995
pastel on paper on aluminum
3 panels, each 59 x 59 in. / 150 x 150 cm

Marlborough



Paula Rego
The King's Death, 2014
pastel
47 x 71 in. / 119.4 x 180.3 cm

Marlborough



Paula Rego
Little Brides with their Mother, 2009-2010
hand colored etching, aquatint and spit-bite, unique proof
18 1/8 x 21 7/8 in. / 46 x 55.5 cm

Marlborough



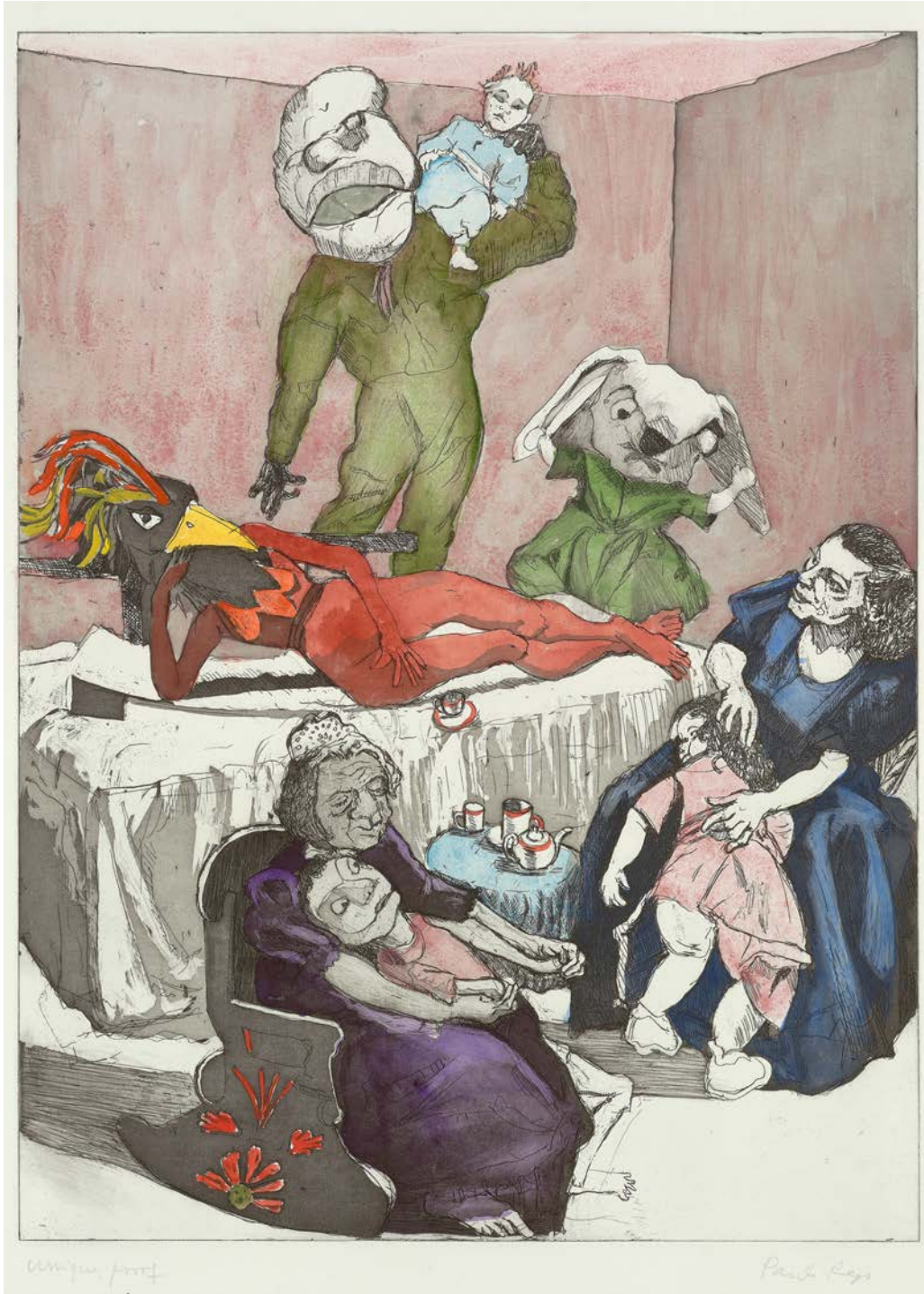
Paula Rego
Crossing the Styx, 2009
hand colored etching
25 1/8 x 15 3/4 in. / 64 x 40 cm

Marlborough



Paula Rego
Lamentation III, 2009-2010
hand colored etching and aquatint
25 1/8 x 19 5/8 in. / 64 x 50 cm

Marlborough



Paula Rego
The Tea Party IV, 2009-2010
hand colored etching and aquatint
25 1/8 x 15 3/4 in. / 64 x 40 cm

Marlborough



Paul Rego
Goat Girl III, 2010-2011
hand colored etching
29 7/8 x 22 1/2 in. / 76 x 57 cm

Marlborough



Paula Rego
After Hogarth II, 2000-2018
unique hand colored etching
paper, 15 x 18 5/8 in. / 38 x 47.3 cm

Marlborough



Paula Rego
Suckling, 2001-2018
unique hand colored lithograph
paper, 29 3/4 x 22 1/4 in. / 75.5 x 56.5 cm

Marlborough



Paula Rego
Celestina's Prize II, 2001-2018
unique hand colored etching
paper, 11 3/8 x 14 3/8 in. / 29 x 36.6 cm

Marlborough



Paula Rego
Prince Pig and his First Bride, 2006
lithograph, ed. 31/35
paper, 25 5/8 x 28 7/8 in. / 65.2 x 73.4 cm

Marlborough



Paula Rego
Prince Pig Courtship, 2006
lithograph, ed. 1/35
paper, 35 1/4 x 25 1/8 in. / 89.5 x 63.8 cm

Marlborough



Ahmed Alsoudani
Insomnia, 2018
acrylic, charcoal, and colored pencil on canvas
89 x 65 in. / 226.1 x 165.1 cm

Marlborough



Ahmed Alsoudani
Machine, 2018
acrylic, charcoal, and colored pencil on canvas
81 x 65 in. / 205.7 x 165.1 cm

Marlborough



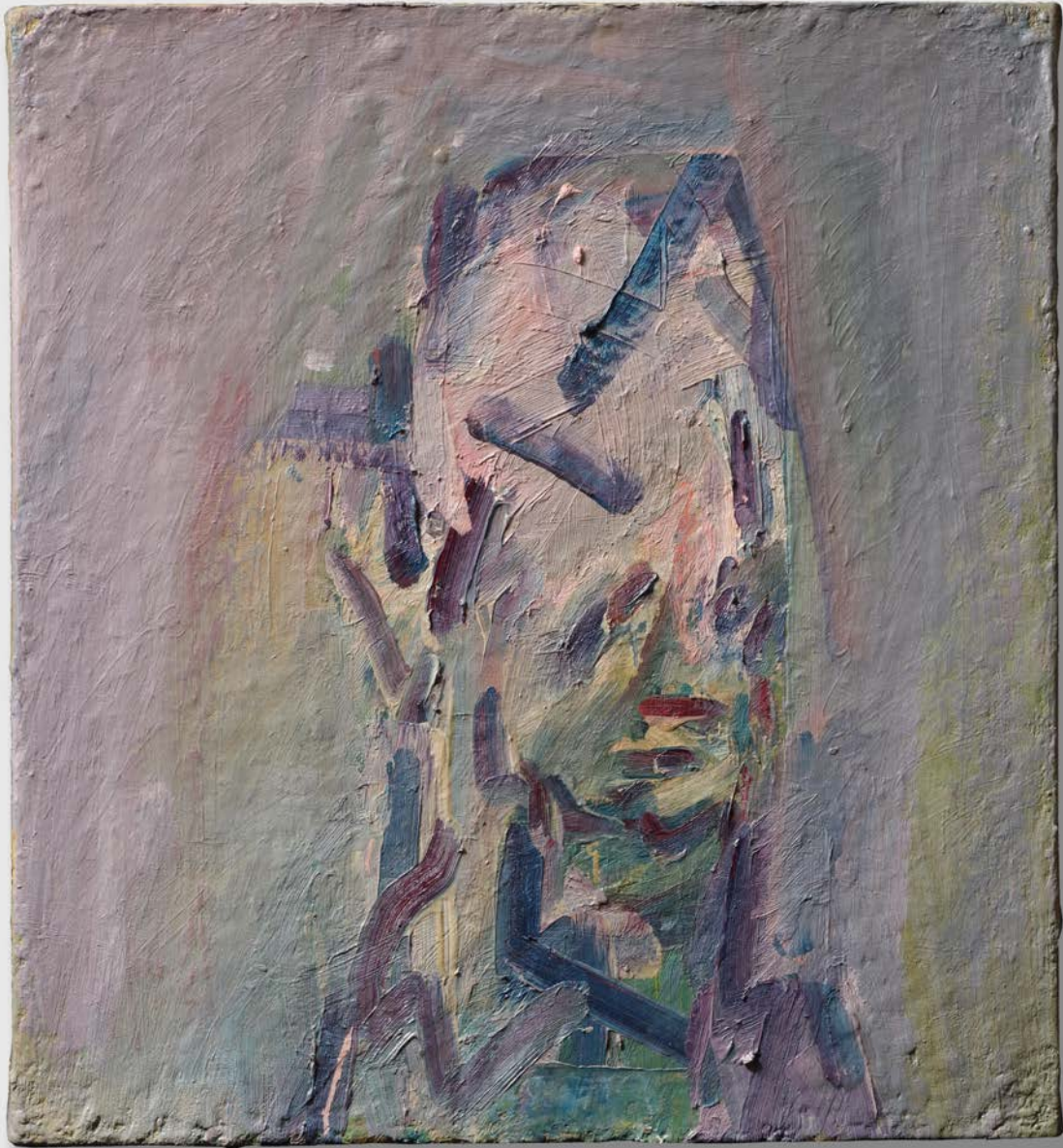
Ahmed Alsoudani
Party, 2018
acrylic, charcoal, and colored pencil on canvas
88 x 64 in. / 223.5 x 162.6 cm

Marlborough



Frank Auerbach
Reclining Head of Julia, 2018-2019
acrylic on board
22 1/4 x 22 1/4 in. / 56.5 x 56.5 cm

Marlborough



Frank Auerbach
Head of Catherine Lampert, 2018
oil on canvas
24 x 22 1/8 in. / 61.2 x 56.5 cm

Marlborough



Werner Büttner
Sozialstaatimpressionen [Welfare State Impressions], 1982
oil on canvas
59 x 47 1/4 in. / 150 x 120 cm

Marlborough



Susan Te Kahurangi King
Untitled, c. 2008-2016
ink on paper
11 1/2 x 16 1/2 in. / 29.5 x 42.2 cm

Marlborough



Susan Te Kahurangi King
Untitled, c. 2008-2016
ink on paper
11 7/16 x 16 3/16 in. / 29.1 x 41.1 cm

Marlborough



Susan Te Kahurangi King
Untitled, c. 2008-2016
ink on paper
11 3/4 x 16 1/2 in. / 29.8 x 41.9 cm

Marlborough



Tony Matelli
Weed #463, 2019
painted bronze
19 x 9 1/2 x 9 in. / 48.3 x 24.1 x 22.9 cm

Marlborough



Tony Matelli
Weed #464, 2019
painted bronze
15 x 7 x 6 in. / 38.1 x 17.8 x 15.2 cm

Marlborough



Tony Matelli
Weed #465, 2019
painted bronze
17 x 8 x 7 in. / 43.2 x 20.3 x 17.8 cm

Marlborough



Yoshiaki Mochizuki
Untitled 5/29, 2018
gesso on board, clay, palladium leaf
17 1/2 x 21 1/2 in. / 43.82 x 54.61 cm

Marlborough



H.C. Westermann
Green River, 1972
ink and watercolor on paper, framed
22 1/4 x 29 3/4 in. / 56.5 x 75.6 cm

Marlborough



H.C. Westermann
Holiday Inn, 1972
ink and watercolor on paper, framed
22 1/4 x 29 3/4 in. / 56.5 x 75.6 cm

Marlborough



H.C. Westermann
Untitled (Scarecrow Cowboy), 1972
ink and watercolor on paper, framed
22 x 30 in. / 55.9 x 76.2 cm

Marlborough



H.C. Westermann
Untitled (Woman Rising from the Harbor), 1973
ink and watercolor on paper, framed
22 3/4 x 30 3/4 in. / 57.8 x 78.1 cm

Marlborough



Zao Wou-Ki
Vague Rouge-Blanc-Bleu, 2004
oil on canvas
59 x 63 3/4 in. / 150 x 162 cm